

## User manual for Text Replace Add-On

With this add-on you can remove spaces from your scan results. You can also remove or change any characters according to your own rules. The activated scan rules will be applied to each scan you make with the C-Pen.

### Installation

With this add-on you can remove spaces from your scan results. You can also remove or change any characters according to your own rules. The activated scan rules will be applied to each scan you make with the C-Pen.

### Starting the Add-On

Make sure that C-Pen Core is started. Then double-click the "C-Pen Text Replace Add-on" icon on your Windows desktop.

### Predefined rules

There are three predefined rules:

- Remove spaces
- Remove all characters except digits
- Remove all characters except digits and letters

#### Example 1 – "Remove spaces":

Scan a number combination:

#43675 0000 095 3958 4# >BN

Using the predefined rule "Remove spaces", the scan result will be:

#43675000009539584#>BN

In the result, all spaces have been removed.

#### Example 2 - "Remove all characters except digits":

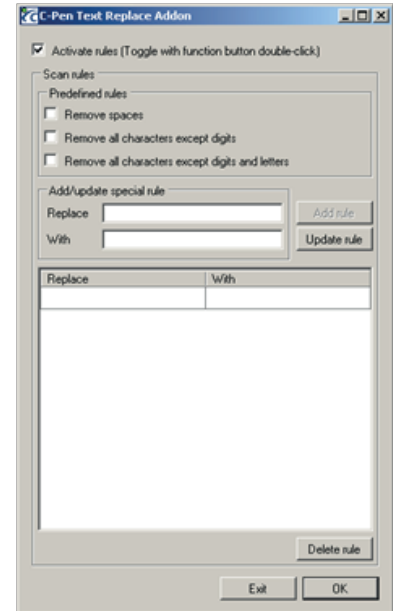
Scan a banking slip OCR code:

#43675 0000 095 3958 4# >BN

Using the predefined rule "Remove all characters except digits", the scan result will be:

43675 0000 09539584

In the result, the number/hash character (#) and all spaces have been removed. This is the preferred mode when scanning OCR-codes to your Internet bank.



### Example 3 - "Remove all characters except digits and letters":

The article number looks like:

BN 0743 1600-4

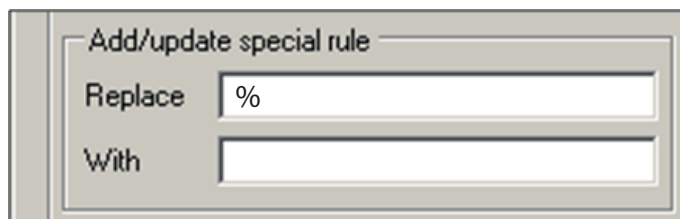
For example, if you are working with an order system that does not accept spaces and hyphens. Select the predefined rule "Remove all characters except digits and letters". The scan result will be:

BN074316004

## Special rules

### Example 4 - "Special rules":

To remove a special character, e.g. % just add a new special rule like this:

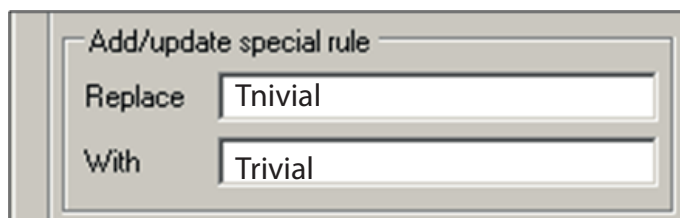


The screenshot shows a dialog box titled "Add/update special rule". It has two input fields: "Replace" and "With". The "Replace" field contains the character "%". The "With" field is empty.

In the second field nothing is written. Hence the character % will be removed from the scan result. (I.e the character % will be replaced with nothing)

### Example 5 - "Special rules":

A word you scan frequently is not correctly recognised. You can add a special rule to replace it with the correct word. Trivial is incorrectly recognised as: Tnivial



The screenshot shows a dialog box titled "Add/update special rule". It has two input fields: "Replace" and "With". The "Replace" field contains the word "Tnivial". The "With" field contains the word "Trivial".

Each scan that previously resulted in "Tnivial" is now recognised as "Trivial".

## Toggle

Rules can be toggled ON/OFF by double-clicking the C-Pen function button. Status will be indicated by a green dot in the icon of the minimised program in the task bar.